

Solution Brief

What's New in Projectplace – January 2016

The first Projectplace release in 2016 brings a number of new features and enhancements to the service. The highlights are:

- New time reporting tool
- Aggregated timeline in project portfolios
- Selected KPI's for project portfolios
- Projectplace content pack in Power BI

New time reporting tool

We have made it even easier for project members to report time with a brand new interface look and feel. Also in the new time reporting tool, time reported against cards that are connected to activities will appear in your time report. Time report information can also be exported to Excel for projects where you have administrative rights.

Aggregated timeline in project portfolios

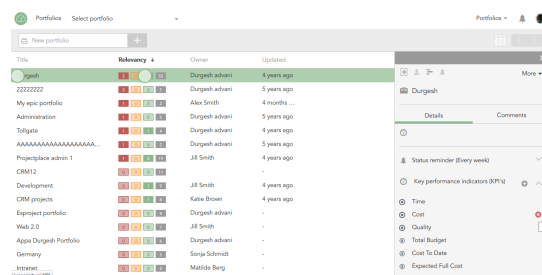
The new portfolio timeline provides a way to visualize the key project milestones aggregated across all projects in a portfolio within a single interactive view.

Selected KPIs for project portfolios

Portfolio administrators now have the ability to choose the KPIs that are relevant for a specific portfolio.

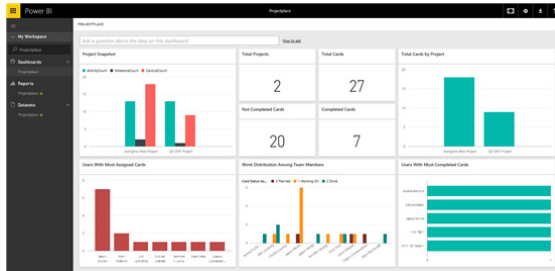
This gives administrators the possibility to remove KPIs that are not used and helps stakeholders focus on what matters. It also makes it possible to have different sets of KPIs for different portfolios.

Contact Projectplace to set up new KPIs for your account.



Power BI content pack

With the newly launched Projectplace content pack for Microsoft Power BI, you can visualize your project data in entirely new ways. The out-of-box reports and dashboard provide key project statistics allowing you to visualize progress, find bottlenecks and identify at-risk activities across projects.



Read more:

<http://blogs.msdn.com/b/powerbi/archive/2015/11/12/visualize-your-projectplace-data-in-power-bi.aspx>

Android improvements

Android users will experience three enhancements, providing them with a more complete Projectplace experience:

- Ability to report time on cards
- Ability to use points estimates in the cards
- Configuration of the profile picture

New version of Projectplace for Windows

We've enhanced the Projectplace support for proxy servers. This change ensures the document management app works for all users, regardless of whether they use a proxy or not. As a result, the document management experience in Projectplace is smooth and user friendly for all users.